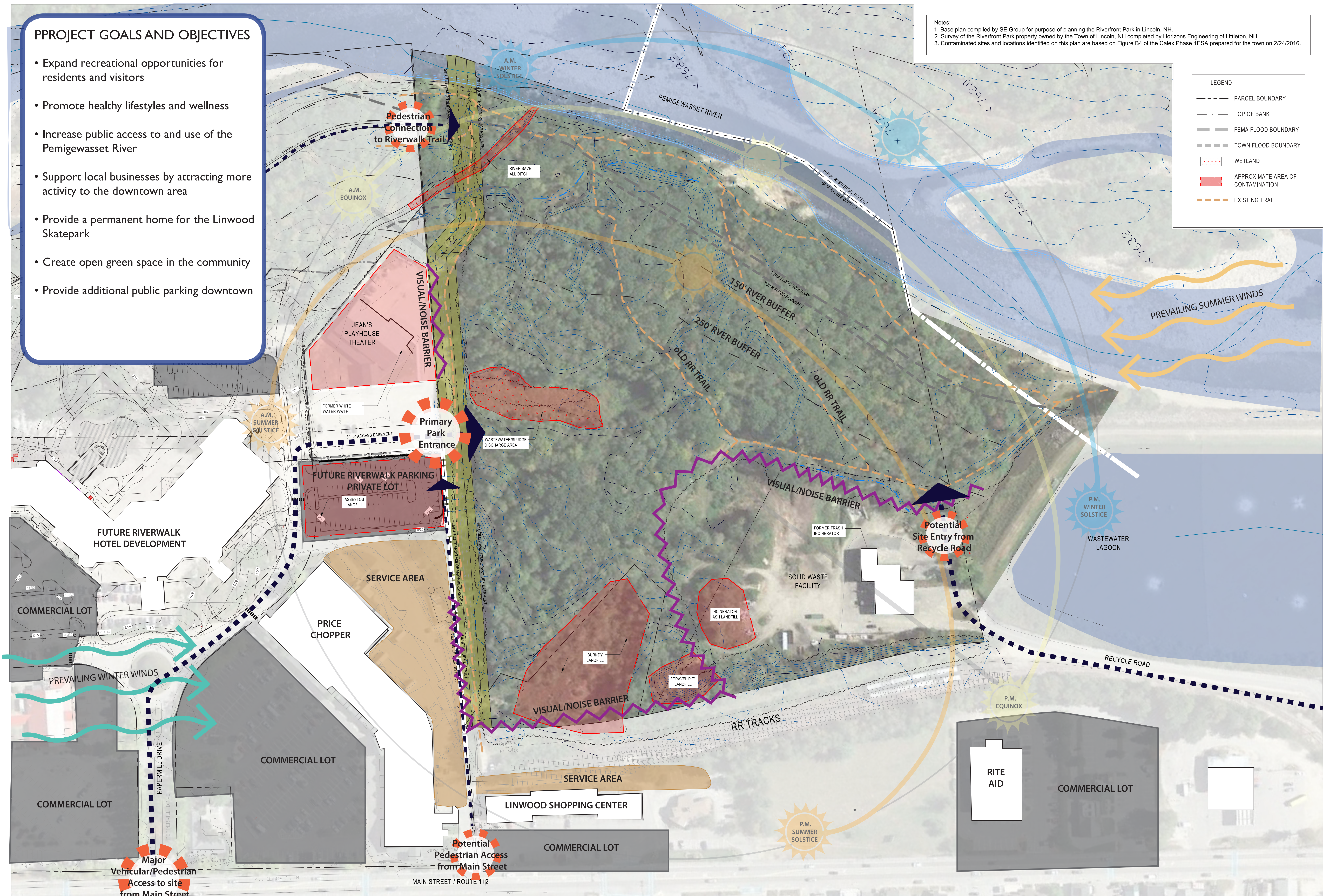


PROJECT GOALS AND OBJECTIVES

- Expand recreational opportunities for residents and visitors
- Promote healthy lifestyles and wellness
- Increase public access to and use of the Pemigewasset River
- Support local businesses by attracting more activity to the downtown area
- Provide a permanent home for the Linwood Skatepark
- Create open green space in the community
- Provide additional public parking downtown

Notes:
1. Base plan compiled by SE Group for purpose of planning the Riverfront Park in Lincoln, NH.
2. Survey of the Riverfront Park property owned by the Town of Lincoln, NH completed by Horizons Engineering of Littleton, NH.
3. Contaminated sites and locations identified on this plan are based on Figure B4 of the Calx Phase 1 ESA prepared for the town on 2/24/2016.

LEGEND	
	PARCEL BOUNDARY
	TOP OF BANK
	FEMA FLOOD BOUNDARY
	TOWN FLOOD BOUNDARY
	WETLAND
	APPROXIMATE AREA OF CONTAMINATION
	EXISTING TRAIL



RIVERFRONT PARK / MASTER PLAN

EXISTING CONDITIONS PLAN



RIVERFRONT PARK / MASTER PLAN

LINCOLN, NH

MAY 8, 2017

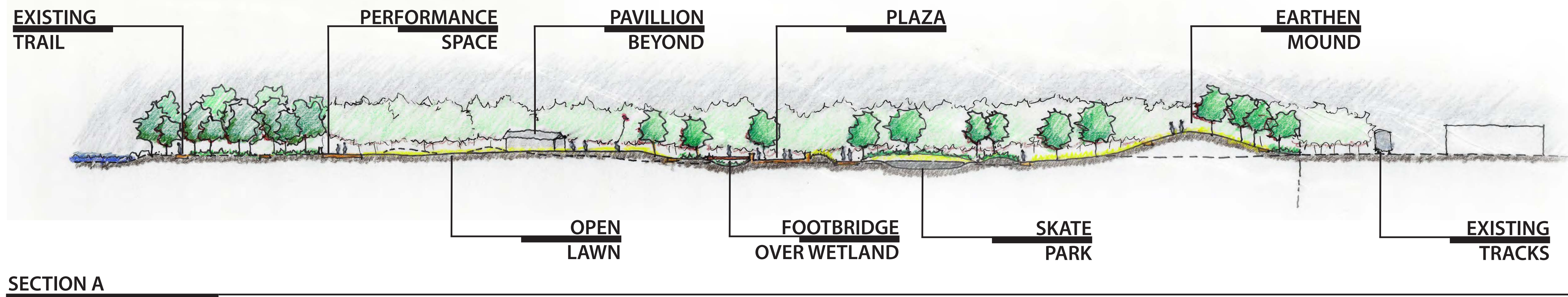
CONCEPT PLAN



0' 60' 120'
SCALE: 1"=60'-0"

KVPartners
CONSULTING ENGINEERS

SE GROUP



SCALE: 1"=60'-0"



PUBLIC ART/SCULPTURE



NATURAL PLAYGROUND



DOG PARK



EARTHEN MOUND AND BERMS



TRAILS AND WALKWAYS



PAVILLION BUILDING



BRIDGE OVER WETLAND AND PARKING BIO-SWALE



FLOW TRAIL AND PUMP TRACK



SKATE PARK



RIVERFRONT PARK / MASTER PLAN

LINCOLN, NH

MAY 8, 2017

CONCEPT IMAGES



PHASE I

- PARKING
- SKATE PARK
- MULTI-USE TRAIL
- RESTROOM FACILITY
- PLAYGROUND
- CANOE LAUNCH
- STORMWATER

PHASE II

- OPEN LAWN
- PERFORMANCE SPACE
- PAVILLION BUILDING
- TRAILS
- RIVER OVERLOOK EVENT SPACE
- EARTHEN MOUND
- DOG PARK
- PUMP TRACK
- FLOW TRAILS
- WETLAND

RIVERFRONT PARK / MASTER PLAN

LINCOLN, NH

MAY 8, 2017
Revised JANUARY 19, 2018

PHASING DIAGRAM



0' 60' 120'
SCALE: 1"=60'-0"

KVPartners
CONSULTING ENGINEERS

SE GROUP